

PORCELANOSA Offsite

MONOBATH

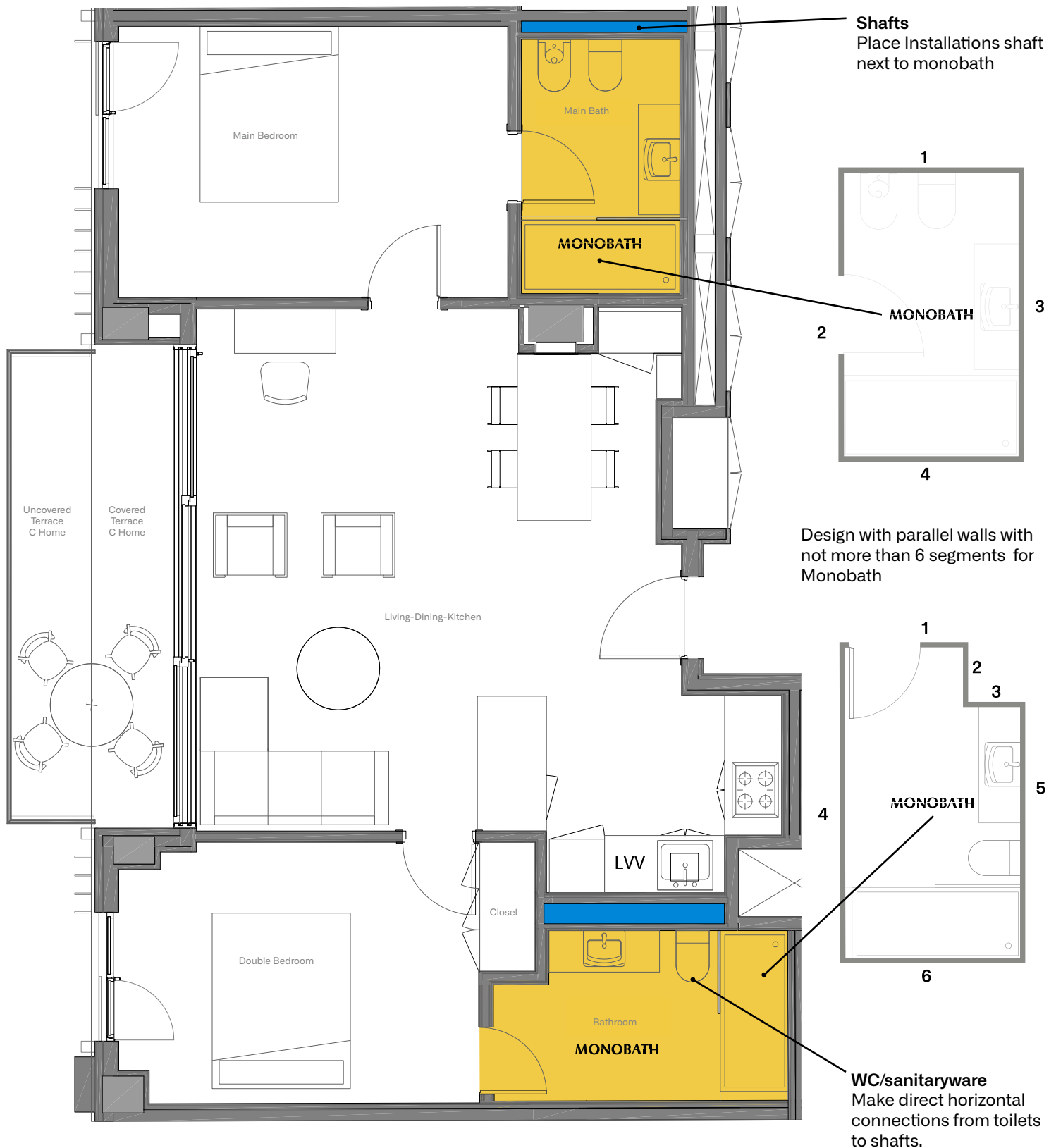
Industrialized Baths

Monobath PORCELANOSA, a new concept in industrialized bathrooms

Butech building technology, has more than 20 years of experience developing products and systems to support the use of ceramics in building industry. Now we present **Monobath, PORCELANOSA** 's commitment to the industrialization of bathrooms production.

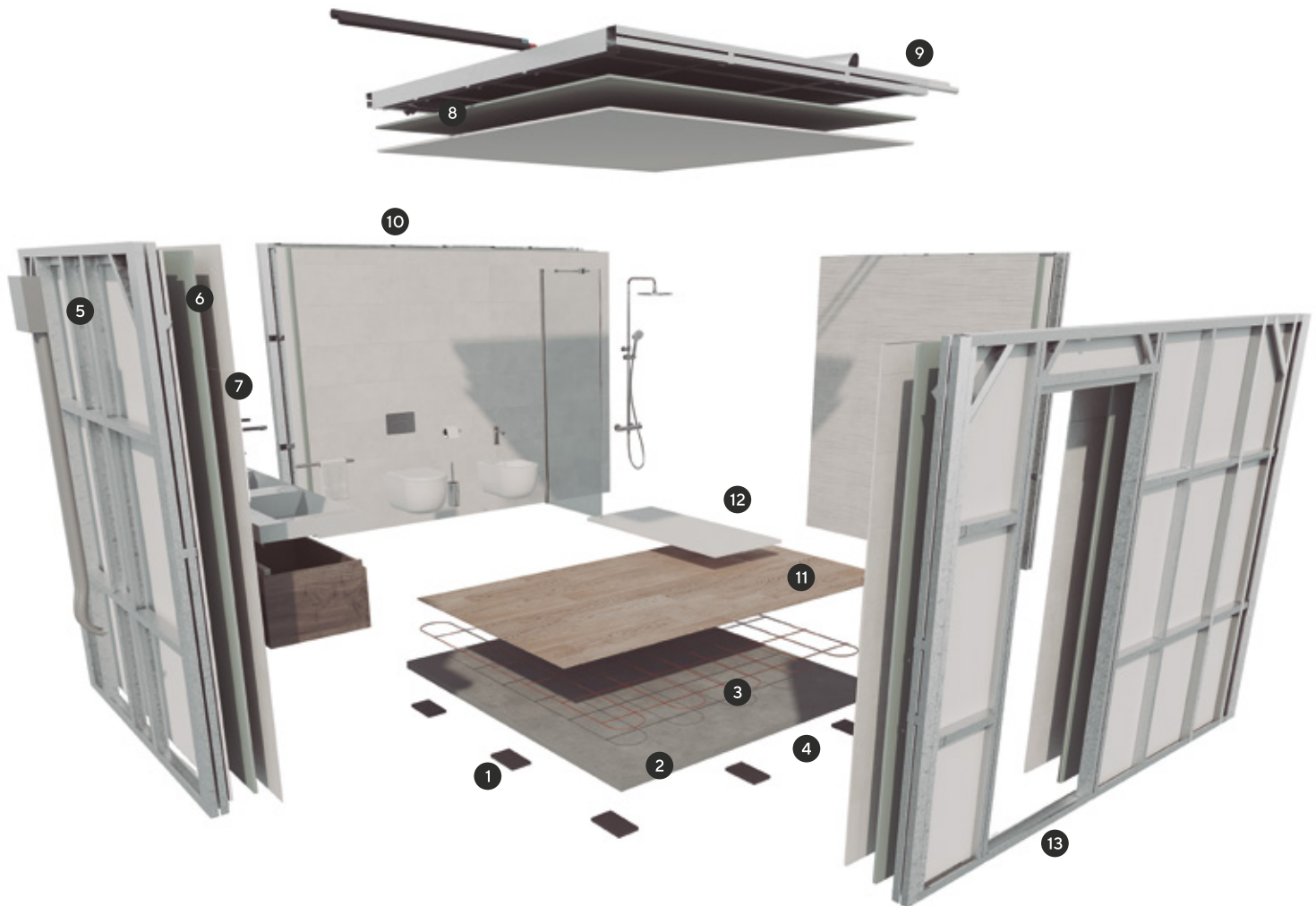
Monobath is an industrial development for the production of completely finished baths, ready to be installed on site, which bringing together the quality of finishings and craftsmanship that characterizes **PORCELANOSA**, with a modern assembly line. It has been conceived as a response to modular construction projects such as **hotels, care homes, hospitals or residential buildings**, although it also can be adapted to **single-family projects** where the highest quality standards are demanded.

- **Example of house floor plan installing monobath.**
Design recommendations to be taken into account:



1. Features for monobath design and installation

The interior finishings of every monobath will be the result of the customization process of the project, allowing you to choose from the wide range of products and finishings offered by PORCELANOSA Grupo.



Features for the design and installation of the Monobath

1. Neoprene bases for the Monobath's support above the slab: 2-20 mm
2. Standard base (80mm): 60 mm concrete base + 20mm adhesive and ceramic
3. Underfloor heating base option (120mm): 50mm concrete base + 50mm hydraulic underfloor heating + 20mm adhesive and ceramic
4. Slim base option (30mm): 12mm base + 18mm adhesive and ceramic
5. Wall and ceiling structures: 75mm steel framing
6. Boards: plasterboards / gypsum fibre / concrete board. As required
7. Interior ceramic cladding: different formats
8. Ceiling: plasterboard panel. Possibility of including registers
9. Installations: Includes lighting, electricity, plumbing and 100mm ventilation above ceiling
10. WC option: grounded, suspended with exposed cistern or embedded (120mm width)
11. Interior ceramic flooring: 20mm approximately
12. Shower tray: Above flooring or wet room shower option
13. Door: Option to include the sliding door frame

MONOBATH

Contact: monobath@butech.es | Further information available at www.butech.net

2. Sections

Monobath Base:

80 - 120 mm

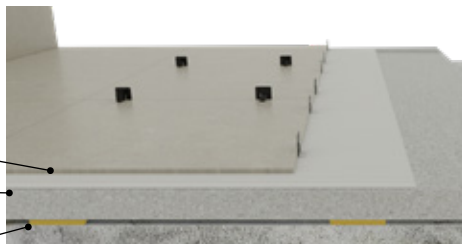
Ceramic floor tile:

80 mm

Adhesive + ceramics 20 mm

Concrete slab 60 mm

Neoprene base 5 - 20 mm



Ceramic floor + heating floor: 120 mm

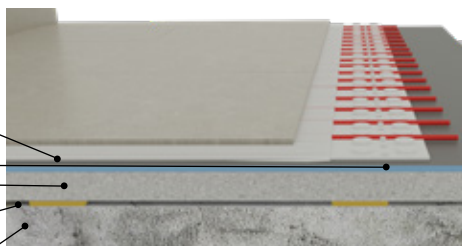
Adhesive + ceramics 20 mm

Heating floor 40 mm

Concept 10 mm

Concrete slab 50 mm

Neoprene base on slab 5 - 20 mm



Monobath walls:

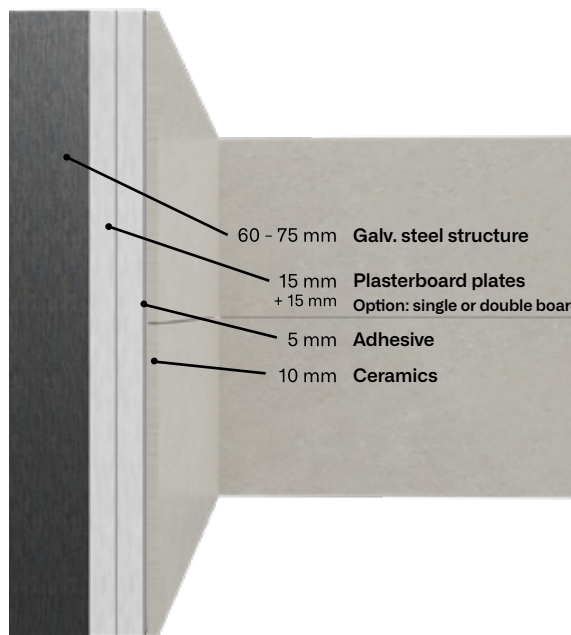
Structure + Plasterboard + ceramics

60 - 75 mm Galv. steel structure

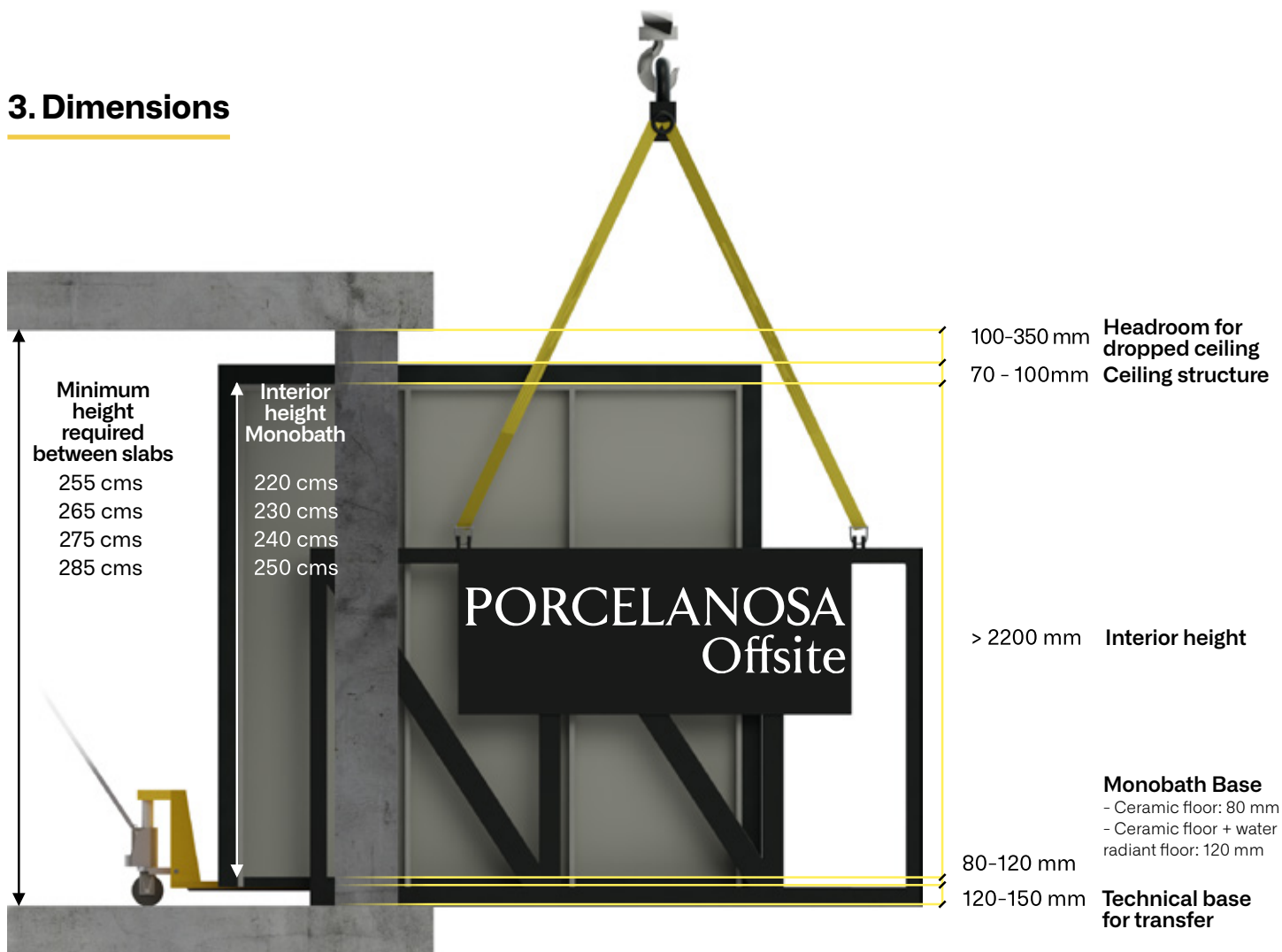
15 mm Plasterboard plates
+ 15 mm
Option: single or double board

5 mm Adhesive

10 mm Ceramics



3. Dimensions





Shipping

Lifting with a crane



Levelling

Final result





BY APPOINTMENT TO
H.R.H. THE PRINCE OF WALES
MANUFACTURER AND DISTRIBUTOR
OF CERAMIC TILES AND BUILDING PRODUCTS.
PORCELANOSA GROUP LIMITED

PORCELANOSA Grupo

MONOBATH

Contact: monobath@butech.es | Further information available at www.butech.net