

PORCELANOSA  
Offsite

**MONOBATH**  
**MONOKITCHEN**

---

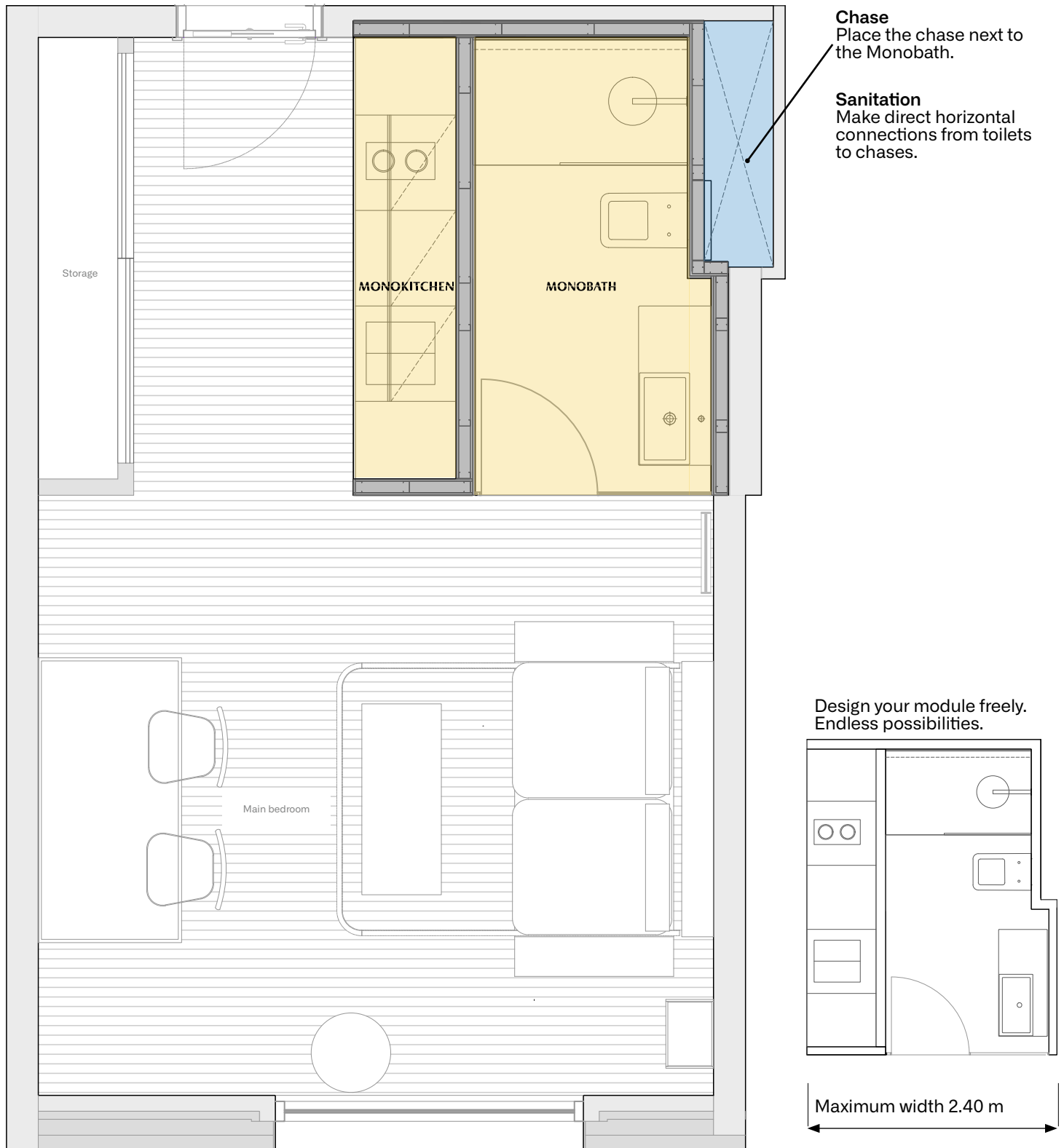
Industrialized Aparthotels

# Aparthotel PORCELANOSA, the perfect solution for large projects

**butech building technology**, a technical solutions company with more than 20 years of experience in the development of products and systems for the commissioning of ceramics, presents the fusion of **Monobath** and **Monokitchen**.

This is the nexus of all the benefits of the well-known **Monobath** and **Monokitchen**. On the one hand, completely finished bathrooms, ready to be installed on site, with the quality of finishes and good workmanship that characterises **PORCELANOSA**. On the other hand, kitchens with all the latest comforts and finishes. All of this is located on a single robotised assembly line. Aimed at modular construction projects such as **hotels, residences, hospitals or residential buildings**, it also adapts to **single-family projects** where the highest quality standards are required.

- **Plan of a aparthotel module.**  
**Design recommendations to consider:**



# 1. Design and installation features

The interior finishes will form part of the personalisation of each project, allowing the choice between the wide range of products and finishes from the PORCELANOSA Group. These finishes can meet the highest expectations resisting high temperatures, impacts, chemical attacks or UV rays, among others while being hygienic surfaces, easy to clean and resistant to abrasion.

As we are in continuous evolution, the components that make up the **Monobath** and **Monokitchen** modules have some of the most rigorous environmental certifications, such as the FSC certificate for the furniture.



## **Características Monobath:**

- 1. Neoprene bases for the Monobath's support above the slab:**  
2-20 mm
- 2. Standard base (80mm):** 60 mm concrete base + 20mm adhesive and ceramic
- 3. Underfloor heating base option (120mm):** 50mm concrete base + 50mm hydraulic underfloor heating + 20mm adhesive and ceramic
- 4. Slim base option (30mm):** 12mm base + 18mm adhesive and ceramic
- 5. Wall and ceiling structures:** 75mm steel framing
- 6. Boards:** plasterboards / gypsum fibre / concrete board. As required
- 7. Interior ceramic cladding:** different formats
- 8. Ceiling:** plasterboard panel. Possibility of including registers
- 9. Installations:** Includes lighting, electricity, plumbing and 100mm ventilation above ceiling
- 10. WC option:** grounded, suspended with exposed cistern or embedded (120mm width)
- 11. Interior ceramic flooring:** 20mm approximately
- 12. Shower tray:** Above flooring or wet room shower option
- 13. Door:** Option to include the sliding door frame

## **Características Monokitchen:**

- 14. Laminate, stratified,** with edges applied with PUR glue
- 15. Front handles "Push"** of aluminium and "Gola" type
- 16. 16 mm thick module with ABS edges** applied with PUR glue.
- 17. Hettich Arcirtech drawer in anthracite grey standard finish**
- 18. Drawer slides for full-extension drawer with retarder**
- 19. Metal hinges Silentia 700 brand Salice with retarder**
- 20. Electrodamásticos incluidos**
- 21. Anodised aluminium plinth: 10 / 12 cm:** 10 / 12 cm
- 22. Concealed base with ventilation grille for refrigerators**

## Examples

The industrialised modules include the interior finishes, furniture, sanitary ware and accessories, as well as plumbing and electrical installations.

It is the perfect industrialised option for your residential buildings. The aparthotel modules can be adapted to any available space, with interior finishes according to range preference.



Choose a level of finishes according to price range, select the interior finishes and combine them to create an exclusive finishing proposal. Make direct horizontal connections from toilets to chases.

**PRESTIGE, PRESTIGE + SUPERIOR, SUPERIOR + ECO PREMIUM, PREMIUM +**





## Assembly



## Shipping



## Lifting with a crane



## Levelling



## Final result





BY APPOINTMENT TO  
H.R.H. THE PRINCE OF WALES  
MANUFACTURER AND DISTRIBUTOR  
OF CERAMIC TILES AND BUILDING PRODUCTS.  
PORCELANOSA GROUP LIMITED

PORCELANOSA Grupo

Why choose the industrialized option?

What problems are solved by installing Monobath?

What improvements does Porcelanosa Offsite provide compared to other developers?

Contact: [monobath@butech.es](mailto:monobath@butech.es) | Further information available at [www.butech.net](http://www.butech.net)